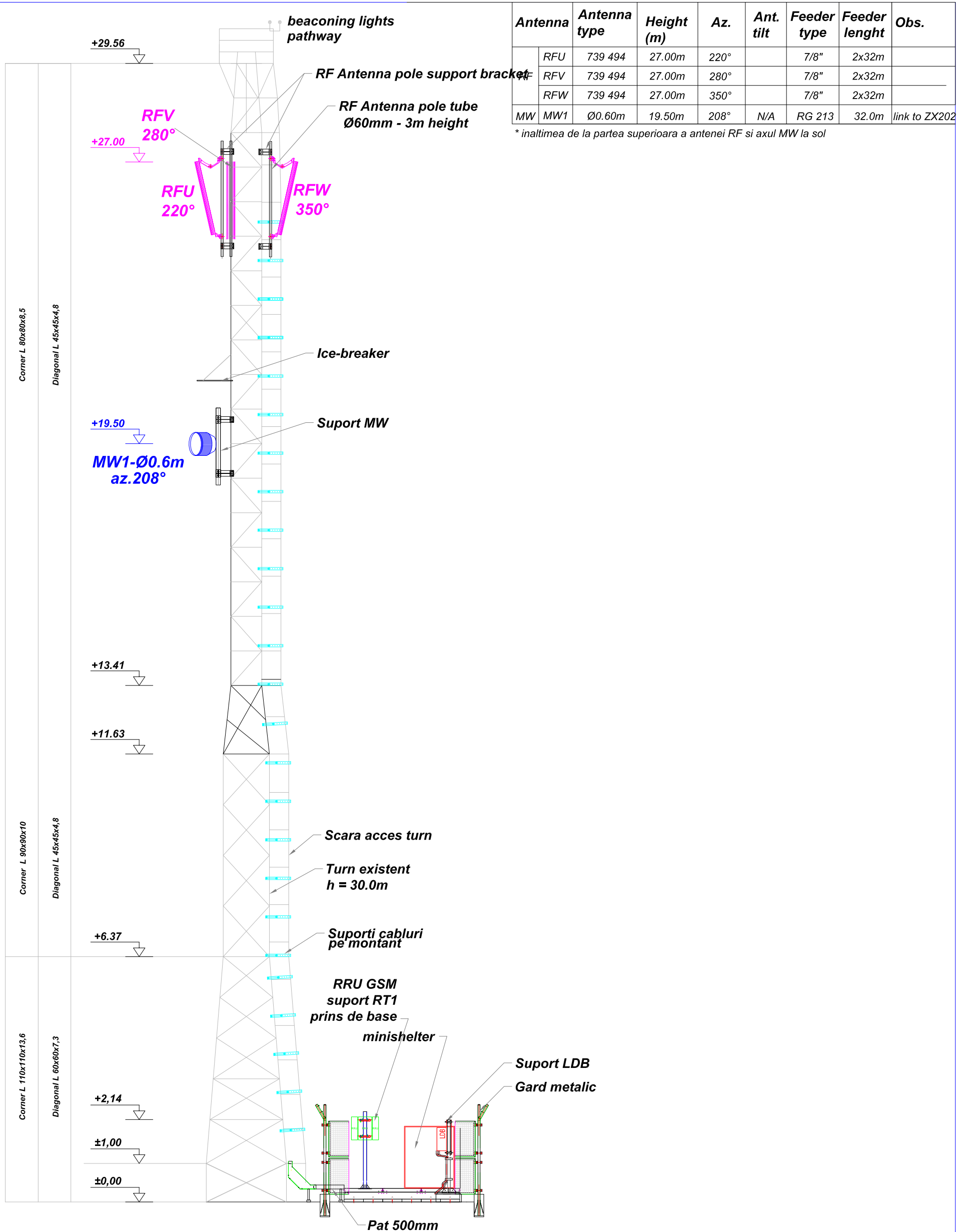


Antenna	Antenna type	Height (m)	Az.	Ant. tilt	Feeder type	Feeder lenght	Obs.
RF	RFU	739 494	27.00m	220°		7/8"	2x32m
	RFV	739 494	27.00m	280°		7/8"	2x32m
	RFW	739 494	27.00m	350°		7/8"	2x32m
MW	MW1	Ø0.60m	19.50m	208°	N/A	RG 213	32.0m link to ZX202

* inaltimea de la partea superioara a antenei RF si axul MW la sol

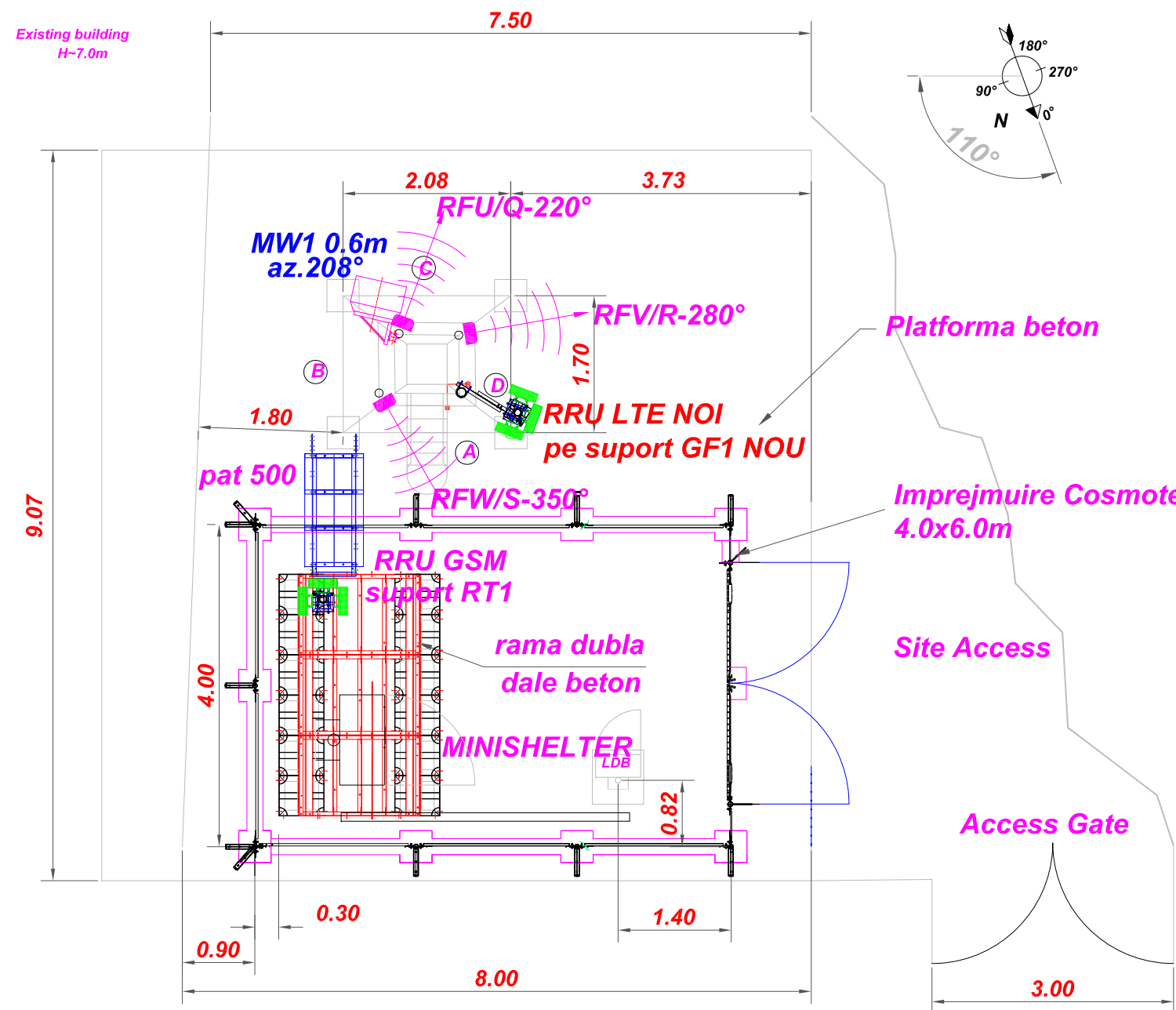
	BENEFICIAR		DATA	NUME	Descriere	SCARA
	DESEANAT	4.07.2018	ing. F.Oprisor		Proiect statie telefonie mobila GSM	SCARA
	VERIFICAT	4.07.2018	ing. F.Oprisor		Faza As Built - BX 497 CUCA	1:75
	APROBAT	4.07.2018	ing. A. Iagar		Adresa: Incinta Agromec, Loc.Cuca, jud.Galati	
CONTRACTOR				Denumire plansa:		
					Plan echipamente	SHEET
					Situatie existenta	FORMAT A3



Antenna	Antenna type	Height (m)	Az.	Ant. tilt	Feeder type	Feeder length	Obs.
RFU	739 494	27.00m	220°		7/8"	2x32m	
RFV	739 494	27.00m	280°		7/8"	2x32m	
RFW	739 494	27.00m	350°		7/8"	2x32m	
MW	MW1	Ø0.60m	19.50m	208°	N/A	RG 213	32.0m link to ZX202

* inaltimea de la partea superioara a antenei RF si axul MW la sol

	BENEFICIAR	DATA	NUME	Descriere Proiect statie telefonie mobila GSM Faza As Built - BX 497 CUCA Adresa: Incinta Agromec, Loc.Cuca, jud.Galati Denumire planşa: Elevatie echipamente Situatie existenta	SCARA
	DESEANAT	4.07.2018	ing. F.Oprisor		1:100
	VERIFICAT	4.07.2018	ing. F.Oprisor		SHEET
	APROBAT	4.07.2018	ing. A. Iagar		FORMAT A3
	CONTRACTOR				



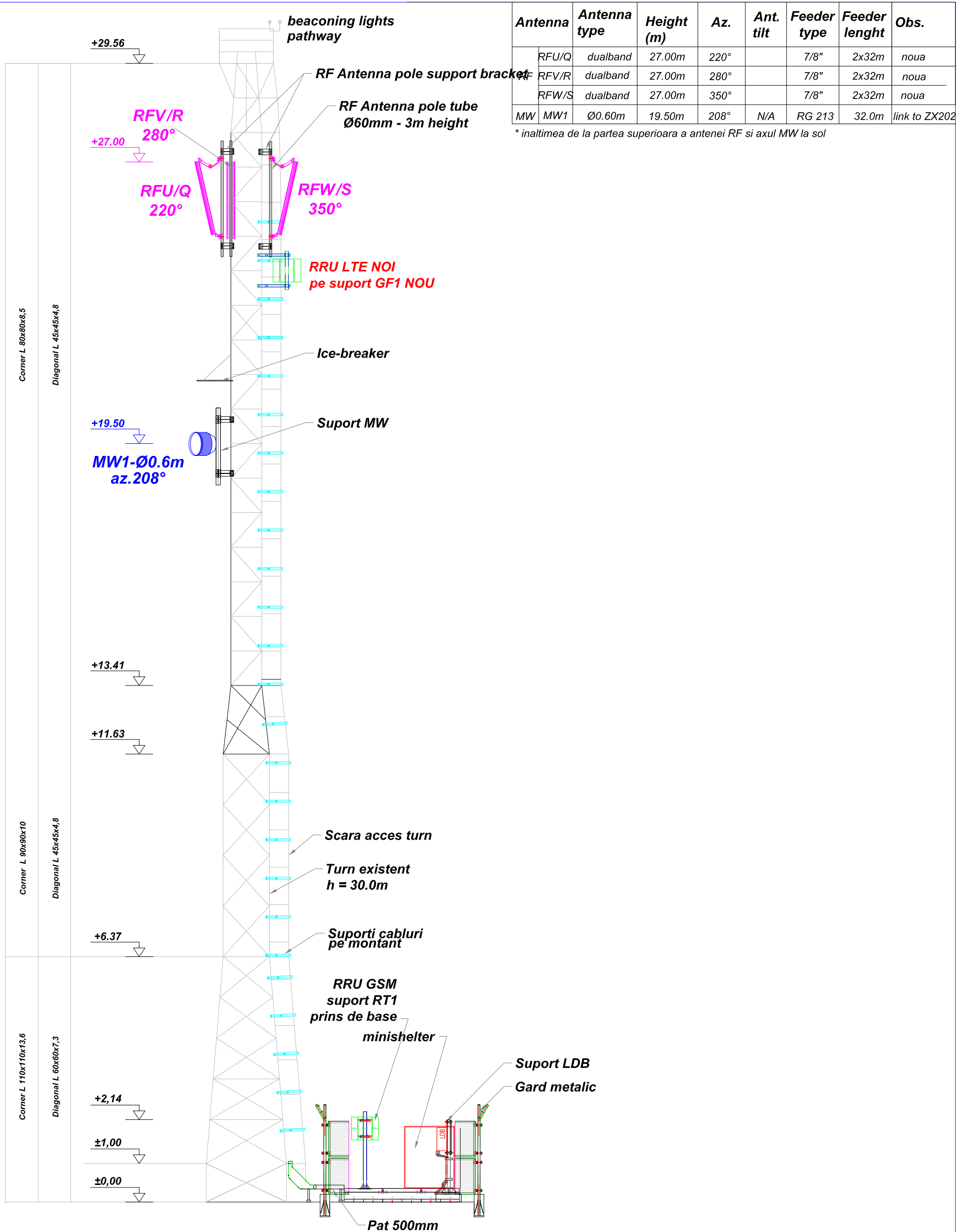
Antenna	Antenna type	Height (m)	Az.	Ant. tilt	Feeder type	Feeder length	Obs.
RF	RFU/Q	dualband	27.00m	220°	7/8"	2x32m	noua
	RFV/R	dualband	27.00m	280°	7/8"	2x32m	noua
	RFW/S	dualband	27.00m	350°	7/8"	2x32m	noua
MW	MW1	Ø0.60m	19.50m	208°	N/A	RG 213	32.0m link to ZX202

* inaltimea de la partea superioara a antenei RF si axul MW la sol

Reconfigurarea siteului BX497 CUCA sa include urmatoarele elemente:

- se vor inlocui antenele existente cu antene dualband
 - se va instala 3x RRULTE noi pe 1xGF1 nou
 - impamantarea RRU se va lega la impamantarea existenta print-un conductor de cupru de 16mm
 - RRU-urile noi se vor alimenta din minishelter la sigurante de 25A din PDU
 - in rack PD un MU nou care se va alimenta de pe 1xsig. de 16A existent in PDU
- Cablurinoi:**
- 3 x FO 50mm
 - 3 X DC Cu 10mm/50m

	BENEFICIAR		DATA	NUME	Descriere	Proiect statie telefonie mobila GSM Faza As Built - BX 497 CUCA	SCARA
		DESEANAT	4.07.2018	ing. F.Oprisor			1:75
		VERIFICAT	4.07.2018	ing. F.Oprisor		Adresa: Incinta Agromec, Loc.Cuca, jud.Galati	
		APROBAT	4.07.2018	ing. A. Iagar		Denumire plansa:	
CONTRACTOR					Plan echipamente	SHEET	
					Situatie propusa	FORMAT A3	



Antenna	Antenna type	Height (m)	Az.	Ant. tilt	Feeder type	Feeder length	Obs.
RFU/Q	dualband	27.00m	220°		7/8"	2x32m	noua
RFV/R	dualband	27.00m	280°		7/8"	2x32m	noua
RFW/S	dualband	27.00m	350°		7/8"	2x32m	noua
MW	MW1	Ø0.60m	19.50m	208°	N/A	RG 213	link to ZX202

* inaltimea de la partea superioara a antenei RF si axul MW la sol

	BENEFICIAR	DATA	NUME	Descriere Proiect statie telefonie mobila GSM Faza As Built - BX 497 CUCA Adresa: Incinta Agromec, Loc.Cuca, jud.Galati Denumire planşa: Elevatie echipamente Situatie propusa	SCARA
		DESEANAT	ing. F.Oprisor		1:100
		VERIFICAT	ing. F.Oprisor		
		APROBAT	ing. A. Iagar		
	CONTRACTOR			SHEET	
				FORMAT	